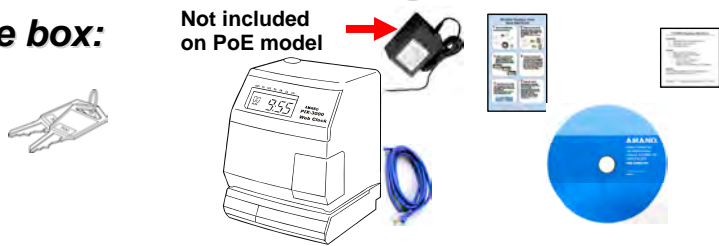
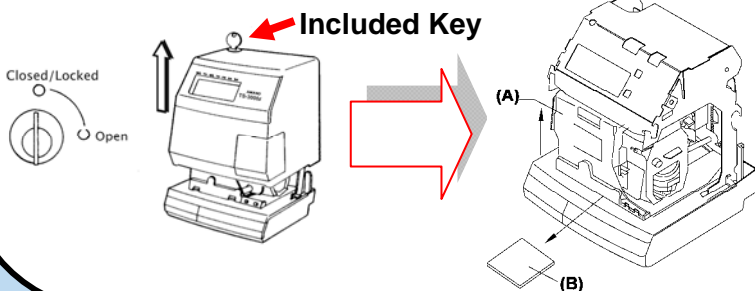


1 Remove the following contents from the box:



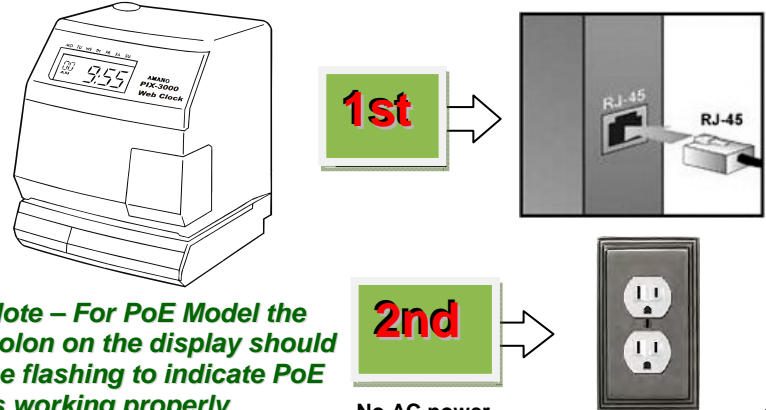
Next

Insert key and turn clockwise to remove the cover. After removing the cover, lift up the Printer Block (A) and remove the Packaging Spacer (B). For PoE Model connect the battery pack. Replace the cover and lock.



2 Plug in the male RJ-45 Ethernet cable to a network connection. Next, plug-in the AC adapter. (No AC adapter is required with Power over Ethernet option).

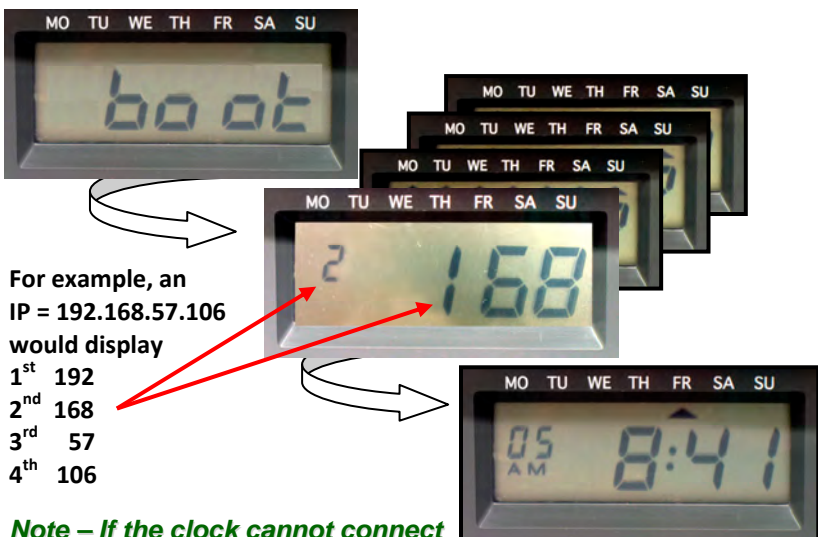
Important Router Notes: Port 5353 must be open for local service discovery. Port 53 must be open for a wide area service discovery.



Note – For PoE Model the colon on the display should be flashing to indicate PoE is working properly.

No AC power required for PoE model

3 During power up, the clock will flash “boot”, then sequentially display the complete IP address twice, and show a normal display of date and time.

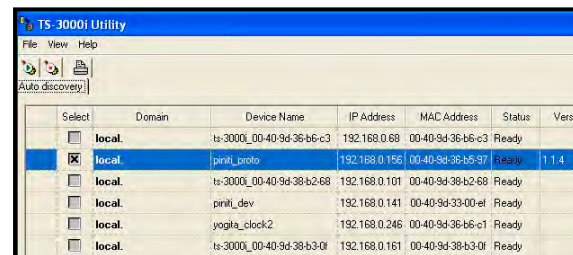


For example, an IP = 192.168.57.106 would display

- 1st 192
- 2nd 168
- 3rd 57
- 4th 106

Note – If the clock cannot connect to the network it will flash 0.0.0.0 for the IP address.

4 Amano recommends using the TS-3000i Utility CD included with your clock – **Install** and **start** the Utility. When the Utility opens it will automatically perform a local network clock search. When the clock appears in the list, double-click on the discovered clock to Login using a browser.



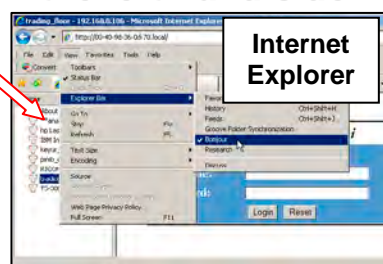
Skip to Step 6 →

Note – with the Utility open click on Help to open the Guide. **Important** – To simplify discovery, the PC & TS-3000i clock should be on the same Subnet. You can use the Settings screen to switch Domains. See Guide.

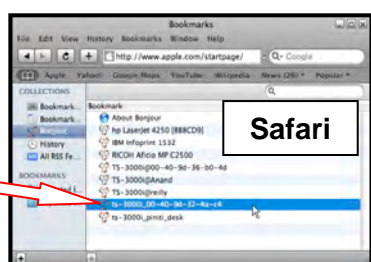
5 With **Internet Explorer (IE)** & **Bonjour®**, select **View** → **Explorer Bar** → **Bonjour**. Locate and click on the discovered clock in the list of devices on the left-hand side to connect for login.

TS-3000i clocks appear here

Note – Bonjour may need to be downloaded & installed as a plug-in.



With **Safari** select **Bookmarks** → **Show All Bookmarks**. Locate and click on the discovered clock in the “Bookmarks” to connect for login.



6 At the clock Login web page enter:

Username = Admin
Password = 6569

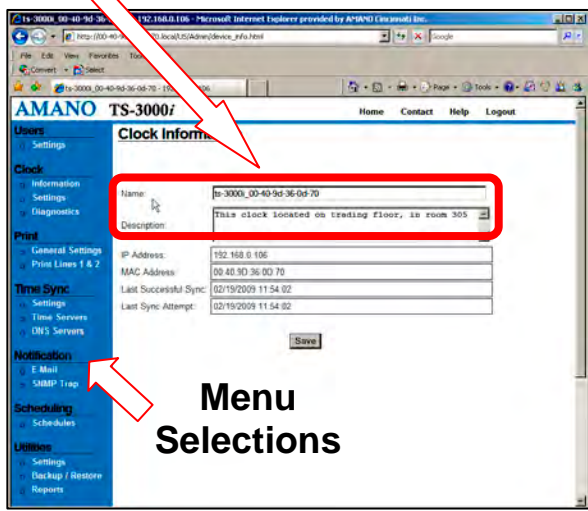
This can be changed later.



Note: Only 1 user can be logged in and the login will timeout after 5 minutes of no activity.

7 After login, the TS-3000i “Clock Information” page will appear. Amano recommends creating a name and description.

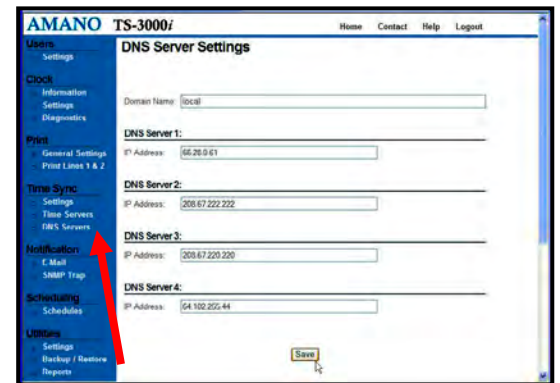
Use the menu Selections on the left with your browser to configure the clock in the following Steps.



Menu Selections

8 If the default **DNS Server** configuration is not acceptable or you do not have access to the Internet, Amano recommends defining the **DNS Servers** to perform time sync and discovery.

Click on the **DNS Servers** link on the left under **Time Sync** to define your **DNS Server(s)**.



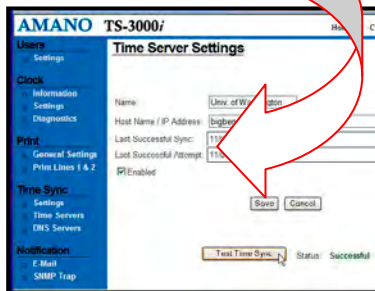
Note: See the User Guide for more detailed DNS Server setup information. See router Port Notes in Step 2.

9 If the default **Time Servers** are not acceptable or you do not have access to the Internet, Amano recommends defining the **Time Servers** (including Internal Time Servers) for time sync. Please define:

- Name
- Host Name / IP Address
- Enabled
- Order of use

Click on the **Time Servers** link on the left under **Time Sync** and from the **Time Server List** click the **Add** button to create a new Time Server. Click the “**Test Time Sync**” button to test the Time Server connection.

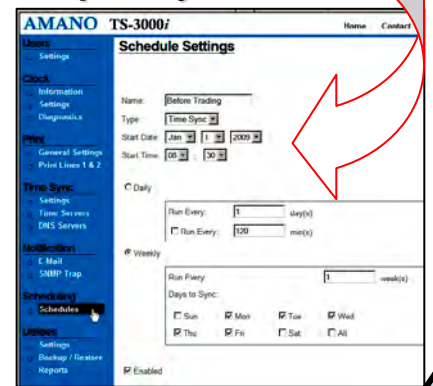
Router Notes: Port 123 must be open to use time servers.



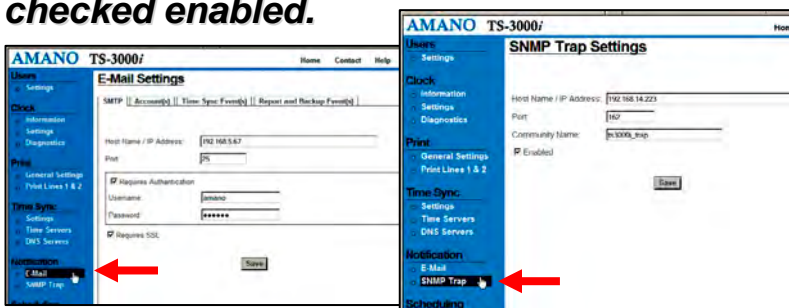
10 Amano recommends defining **Schedules** for time sync to maintain your clock’s **time sync**. Your clock’s **time sync**. Your clock comes with 2 default schedules that can be edited. Please define:

- Name & Type
- Start Date & Time
- Daily or Weekly Frequency

Click on the **Schedules** link on the left under **Scheduling** to define time sync frequency. Also, you can define **Backup & Reports** schedules here.



11 If **E-mail notification** and **SNMP Traps** are desired, Amano recommends defining your **E-mail** and **SNMP Trap** settings. Note: **E-mail notification** must also be checked enabled.



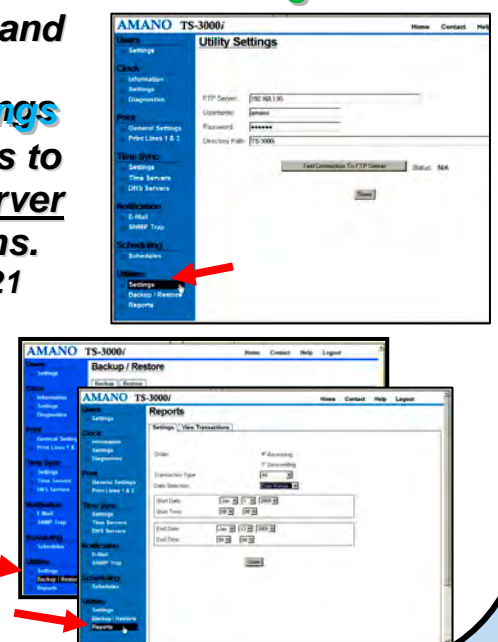
Click on the **E-Mail** link on the left under **Notification** for e-mail. Click on the **SNMP Trap** link on the left to define **SNMP Traps**.

Router Notes: Port 25 must be open to use E-mail notification. Port 162 must be open to use **SNMP Traps**.

12 Amano recommends to **Backup** the clock transaction & configuration settings, please define your **Utilities Settings** for **Backup, Restore and Report** functions. Click on the **Settings** link under **Utilities** to define an **FTP Server** for these functions.

Router Notes: Port 21 must be open for **FTP**.

Click on the **Backup/Restore** or **Reports** link to perform these functions.



For additional information, click on **Help** with the Utility open to launch the TS-3000i User Guide.

Also, you can go to www.amano.com/time, e-mail atvs@amano.com, or call us at 1-800-896-7035.

Note: For PoE models, leaving the TS-3000i clock unplugged from a PoE terminal or without power for more than 24 hours may create a problem with the clock starting up (you will see “low bat” briefly appear in the display). In this instance, the clock should be started with the battery pack cable disconnected and the clock plugged into a PoE terminal. Wait until the clock starts up, or displays the time, then reconnect the battery pack cable and it will charge. During this time, Amano recommends to wait 24 hours before printing.